

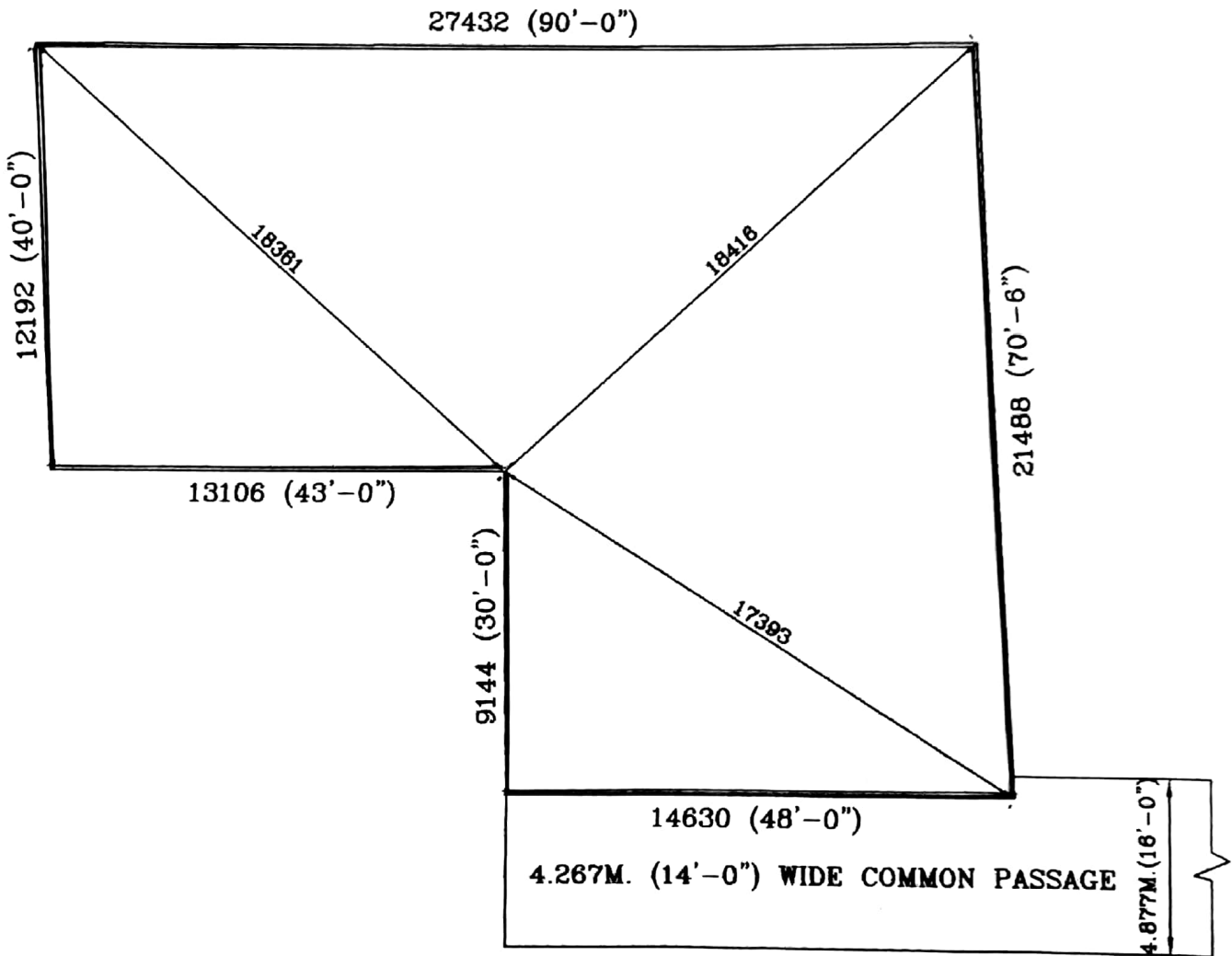
SITE PLAN OF LAND AT PREMISES NO.-122/5, DIAMOND PARK
 K.M.C. WARD NO.-143, BOROUGH-XVI, AT MOUZA-KALUA, J.L. NO.-22,
 R.S. NO.-336, PART OF R.S. DAG NO.-65, R.S. KHATIAN NO.-289
 L.R. DAG NO.-74, L.R. KHATIAN NO.-7198 & 7199, UNDER K.M.C.
 P.S.-HARIDEVPUR, DIST.-24 PARGANAS(SOUTH) SCALE = 1 : 200

AREA OF LAND= 6KT.-15CH.-26SFT.[APPX.] = 466.462 SQM.

GPS CO-ORDINATE

LATITUDE = 22°27'06.7"N

LONGITUDE = 88°18'32.4"E



S. Bandyopadhyay
 B.E.(C), F.I.E., FIV(IND), CE(IND)
 L.B.S.-1/700, E.S.E.-1/117

SIGNATURE OF L.B.S.